

# Port of Chehalis Redistricting Summary Statistics

## Final Map – District Summary Statistics

02/16/2022



### Ideal Population Criterion

Ideal Population	5,288
Overall Range	0.2%
<div><div>&lt; 5.0%</div><div>5.0 - 10.0%</div><div>&gt; 10.0%</div></div>	

2020 Census P.L. 94-171 Redistricting  
Data Summary Files - Total Population.

### Total Population & Deviation per District

District ID	Total Population	Over / Under Ideal	Deviation From Ideal
1	5,289	1	0.0%
2	5,283	-5	-0.1%
3	5,293	5	0.1%

### Total Population by Race/Ethnicity per District

District ID	White	Black or African American	American Indian or Alaska Native	Asian	Native Hawaiian and Pacific Islander	Some Other Race	Two or More Races	Hispanic/Latino
1	82.6%	0.7%	1.0%	1.6%	0.2%	0.8%	5.9%	7.2%
2	77.8%	2.1%	1.0%	1.4%	0.2%	0.6%	5.7%	11.1%
3	78.9%	0.5%	1.1%	1.3%	0.2%	0.4%	6.3%	11.4%

2020 Census P.L. 94-171 Redistricting Data Summary Files - Total Population by Race and Hispanic/Latino Origin.

### CVAP by Race/Ethnicity per District

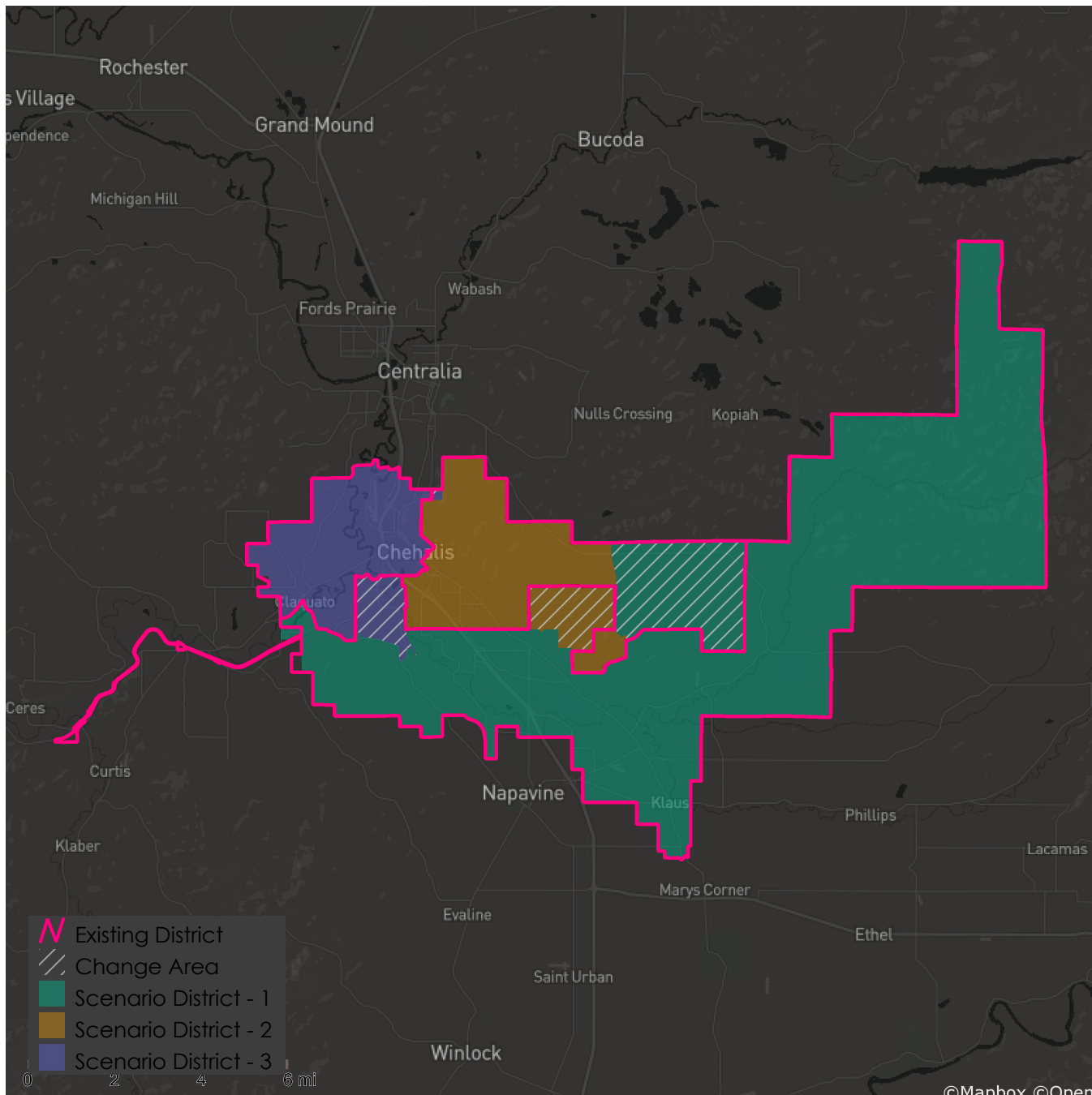
District ID	White	Black or African American	American Indian or Alaska Native	Asian	Native Hawaiian and Pacific Islander	Two or More Races	Hispanic/Latino
1	91.5%	0.7%	1.2%	0.9%	0.4%	2.9%	2.2%
2	88.9%	0.9%	0.0%	1.4%	0.0%	3.8%	5.1%
3	86.2%	1.4%	0.5%	0.3%	0.0%	3.0%	8.6%

2015-2019 American Community Survey Citizen Voting-age Population (CVAP) by Race and Ethnicity Special Tabulation. Rounding of estimates may lead to summation of race/ethnicity percentages not equal to 100% (+/- 1%)

# Port of Chehalis Redistricting Summary Statistics

## Final Map – District Summary Statistics

02/16/2022



## Metadata

Run Time Stamp: 2022-02-16 12:17:24  
Workflow Directory: X:\F0227\_Port\_of\_Chehalis\04\_Redistricting\_Analysis\Projects\Alteryx\  
District Scenario: File: gdb:X:\F0227\_Port\_of\_Chehalis\04\_Redistricting\_Analysis\Data\Redist.gdb|||Districts\_Scenario\_2\_Blocks